

# Together in Service: Delivering the Ideal Local Government

Wally Bobkiewicz, City Administrator of Issaquah, WA









**35 years in local government**

**Washington**

**Illinois**

**California**

**23 years as city  
manager/administrator**



# About Issaquah, WA



- 40,000+ residents
- Commercial & retail hub in eastern King County
- Strong Mayor form of government
- “Trailhead City”
- Costco and REI HQ



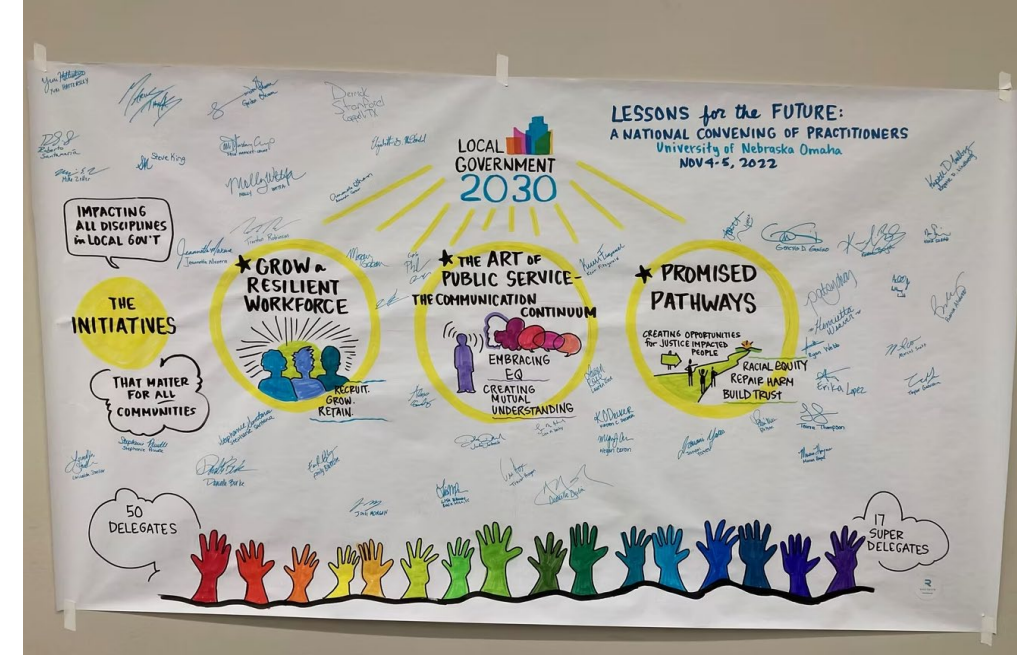






# Issaquah Mayor & City Council





LOCAL  
GOVERNMENT  
2030



**GRAND CHALLENGES**  
IN PUBLIC ADMINISTRATION



**LOCAL GOV**

**250**



# Future Leaders Coffee



- ~50 emerging career professional
- Engaging communities and employees
- Strengthening the workforce pipeline for local government
- Building civic capacity



# Challenges

Civility

Partisanship

Perception

Financing

Delivering  
the Ideal  
Local  
Government



# The Ideal Local Government



Critical  
Services



Quality of  
Life



Community  
Leadership



Professional  
Staff

**what we provide**

**who makes it possible**



**What Can We Do?**



# What Can We Do?

Appreciation

Professional  
Support

Removing  
Obstacles to  
Good Work





**The Salmon Bowl**

**All-City Recognition**

# Appreciation







**Informal Check Ins**

**Mentor Program**

# **Professional Support**

**Policies**

**Resources**

**Practices & Norms**

# **Removing Obstacles to Good Work**



# What to do Next Week

## Appreciation

- Personally recognize good work
- Share a story celebrating an accomplishment

## Professional Support

- Check in on a peer
- Support your team's professional development

## Removing Obstacles to Good Work

- Talk about obstacles
- Remove an obstacle

# The Ideal Local Government



Critical  
Services



Quality of  
Life



Community  
Leadership



Professional  
Staff

**what we provide**

**who makes it possible**



Why Do Any of This?

**We are in the  
democracy business.**

# Thank you!

Wally Bobkiewicz

[wallyb@issaquahwa.gov](mailto:wallyb@issaquahwa.gov)



**Local  
Government  
2030**



**Local Gov  
250**