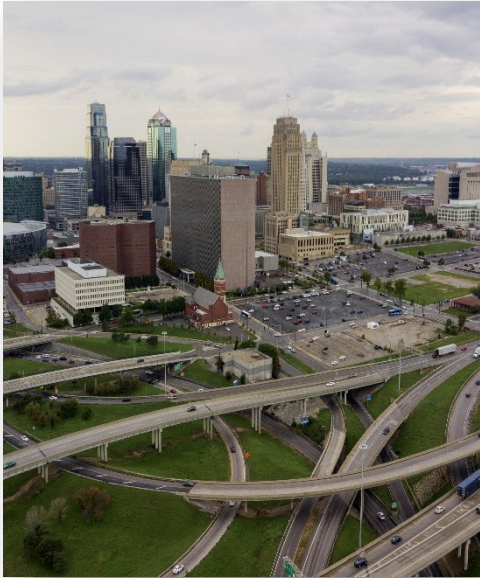




**MARC BOARD**  
**MAY 27, 2025**

# WHAT IS A METROPOLITAN TRANSPORTATION PLAN (MTP)?

- Required planning document for our metro. Update required every 5 years
- Sets vision, establishes goals and identifies regionally significant projects
- Guides how regional transportation system will be developed for next 25 years



Major streets and  
highways



Public  
transportation

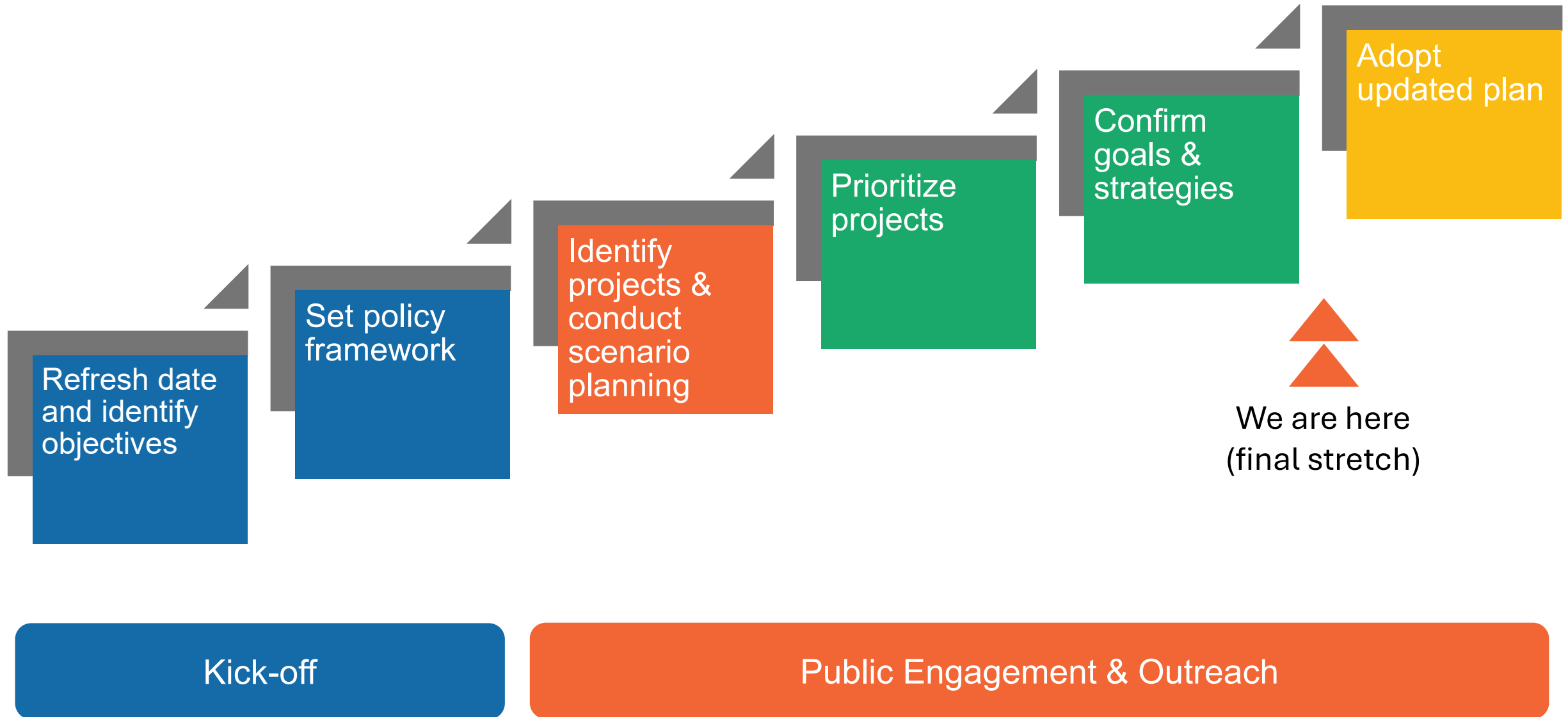


Bike & pedestrian  
accessibility



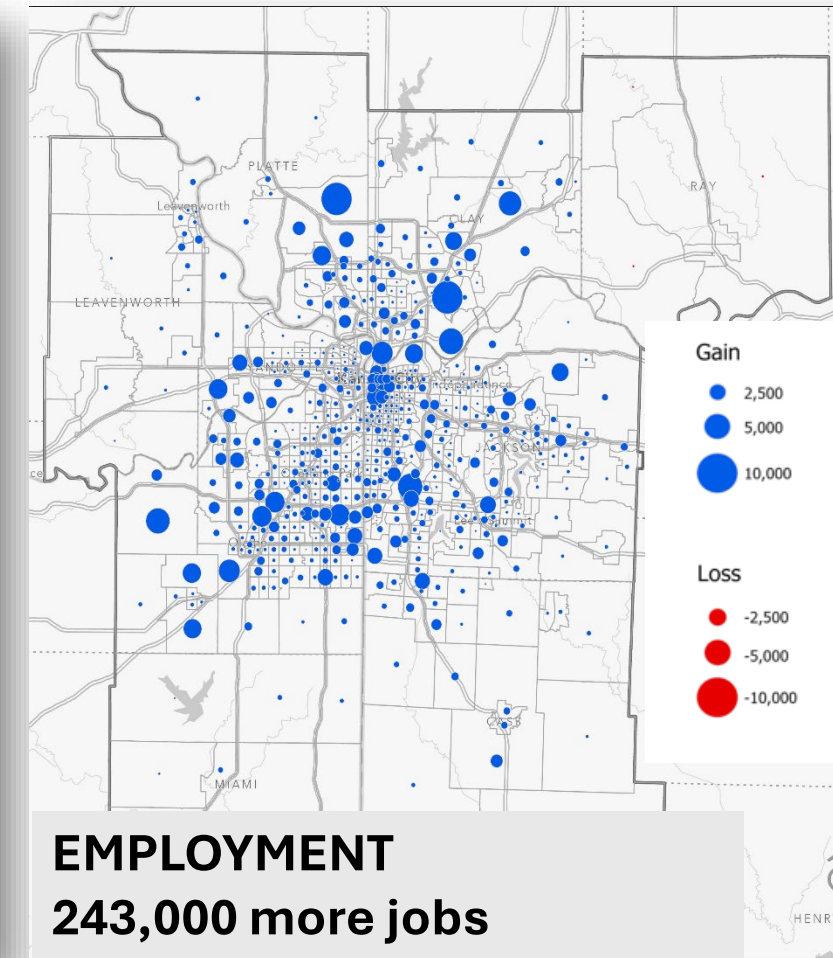
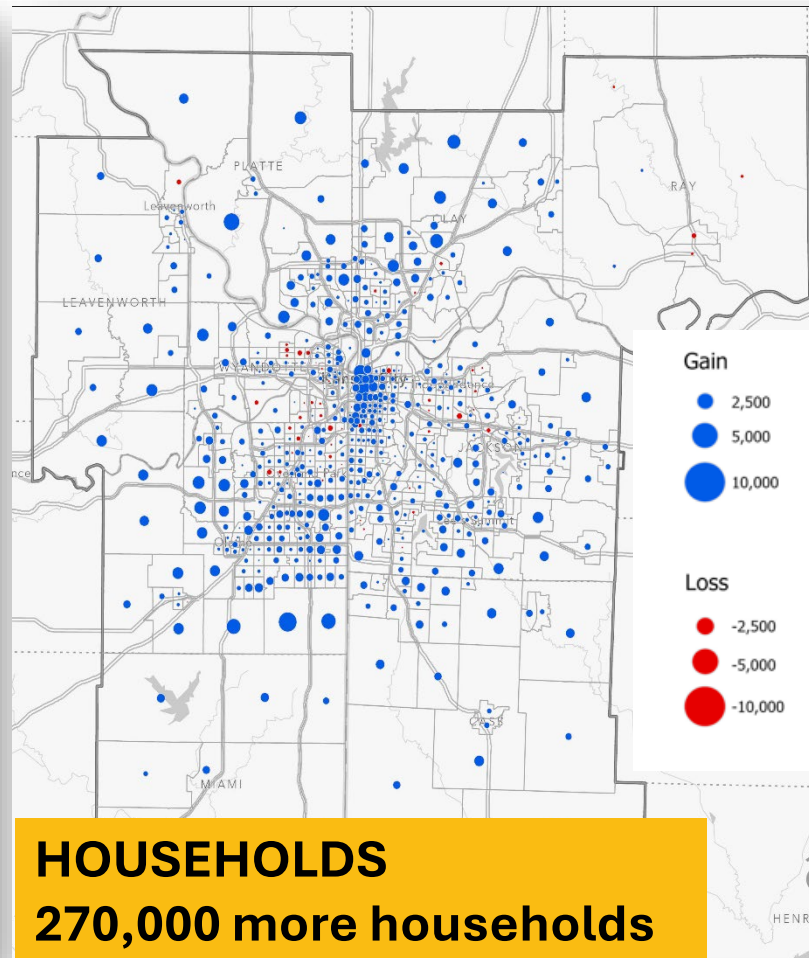
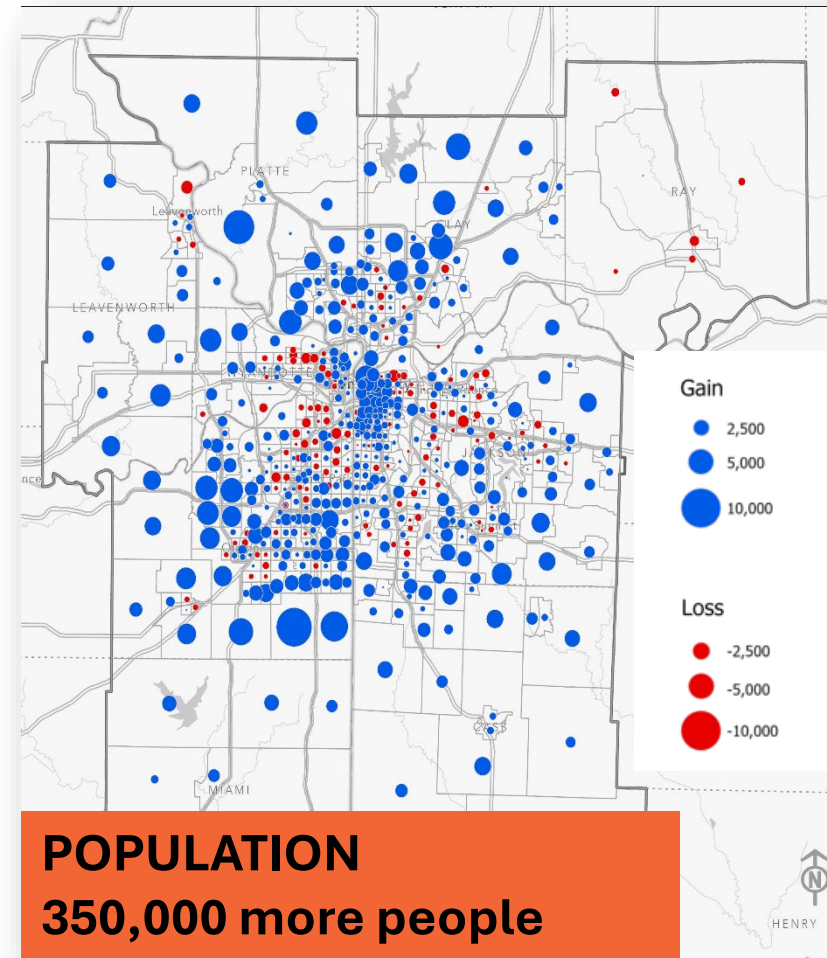
Freight  
transportation

# UPDATE TIMELINE





# LAND USE FORECAST



**Our rate of growth is slowing down. Our region is also becoming older and significantly more diverse. Households will also shrink in size.**

# UPDATED POLICY FRAMEWORK



**GOAL — HOUSING**



**STRATEGY — DIGITAL  
CONNECTIVITY and  
HOUSING  
COORDINATION**



**LANGUAGE  
UPDATES**

# FINANCIAL CAPACITY ANALYSIS

## FORECAST

- Re-evaluate transportation funding through 2050
- Based on past and recent investment levels projected forward



## OUTCOMES

- Funding sufficient for highway/roadway management, operations and limited expansion for economic development and congestion relief.
- *No revenue forecasted for **new** transit projects or services*

# PROJECTS

**59**  
agencies

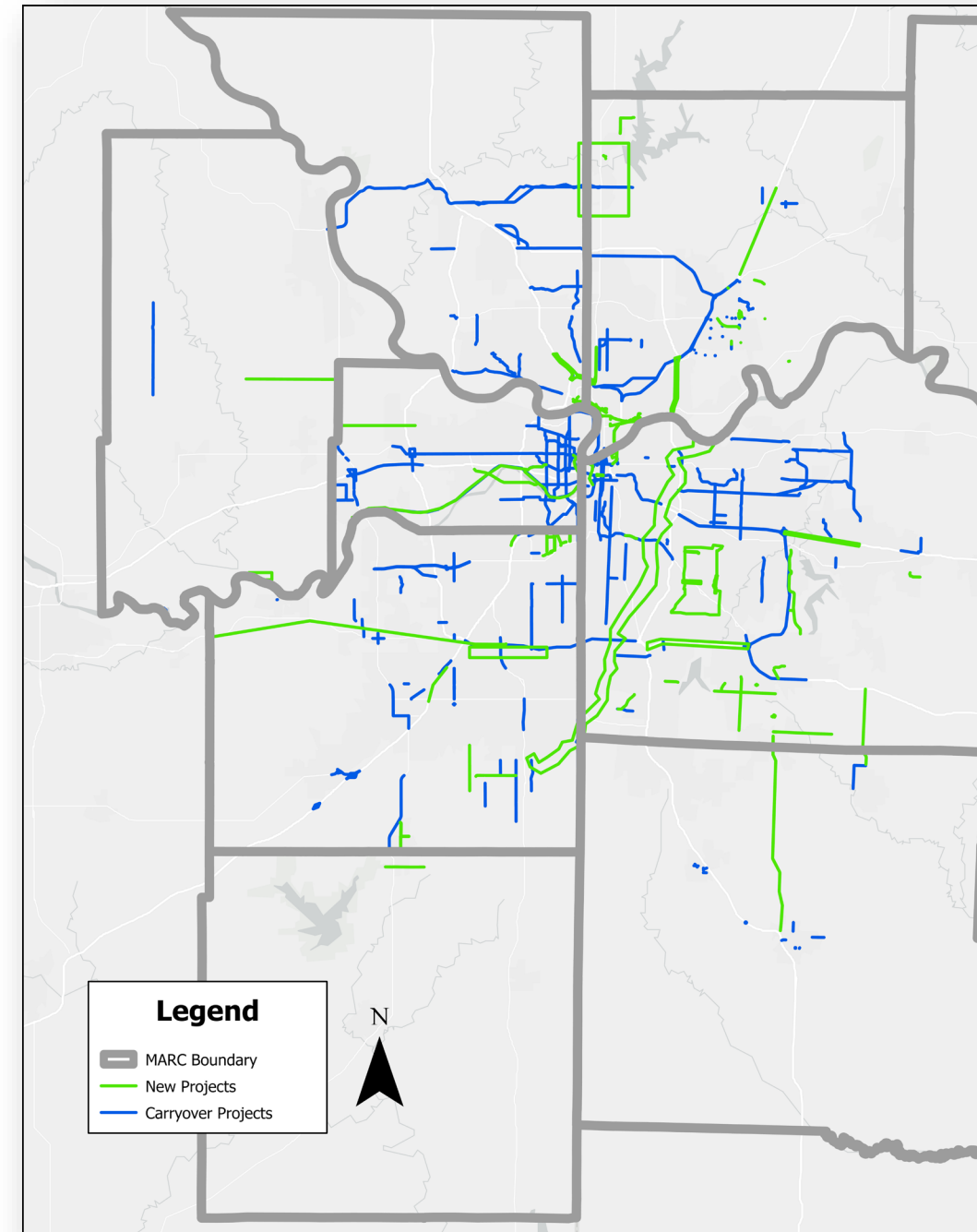
**526**  
projects (\$25.1b)

**240**  
financially constrained projects

- 144 existing transportation system rehab (\$5.2b)
- 96 system expansion or new facilities (\$5.4b)

**286**  
illustrative projects (\$14.5b)

Project categories: Kansas state system, Kansas local system, Missouri state system, Missouri local system and transit projects





# RECOMMENDED WORK (POST ADOPTION)



Invest more in transit  
— Smart Moves  
implementation



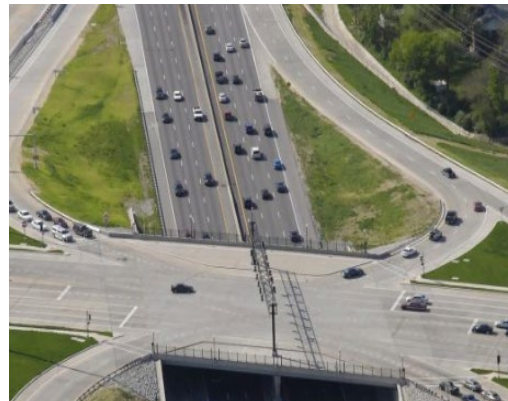
Continue Complete  
Streets implementation  
across region



MARC Committee  
structure and process  
review



Identify, select and  
prioritize multimodal  
freight projects



Reconsider  
CMAQ funds  
distribution targets



Support various  
corridor planning  
studies



# PLAN WEBSITE



[update.connectedkc.org](https://update.connectedkc.org)



# FINAL ROUND OF OUTREACH & ENGAGEMENT

- Public review and comment — open April 16 through May 30
- Stakeholder engagement — outreach to MARC & external stakeholder groups
- Website & social media — advertise plan & comment form
- Two open houses/Office hours at MARC offices
  - Tuesday, May 20 11 a.m.–6 p.m.
  - **Tuesday, May 27 11 a.m.–6 p.m.**
- Outcomes will be summarized and reported in June 2025



# PUBLIC COMMENTS (RECEIVED)

- Draft plan includes “Community Impact Analysis” that assesses potential disparate impacts of plan investments and projects
- Analysis concludes that plan does not demonstrate disparate impacts
- Concerns expressed that this analysis may not align with current administration’s policy focus
- MARC reviewing options to address this concern prior to potential plan approval in June 2025

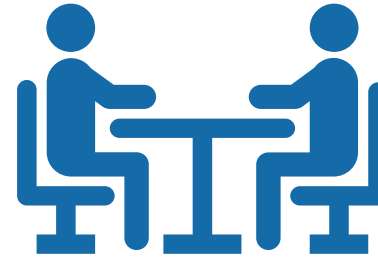
# WHAT'S NEXT?



Complete draft  
plan write-up  
**(1Q ~ 2Q 2025)**



Release draft plan  
for public review  
and comment  
**(April 2025)**



Final round  
of public  
engagement  
**(May 2025)**



Approval by TTPC  
and MARC Board  
of Directors  
**(June 2025)**







**CONNECTEDKC**  
**2050**  
**UPDATE**  
REGIONAL TRANSPORTATION PLAN  
**THANK YOU!**

[update.connectedkc.org](https://update.connectedkc.org)